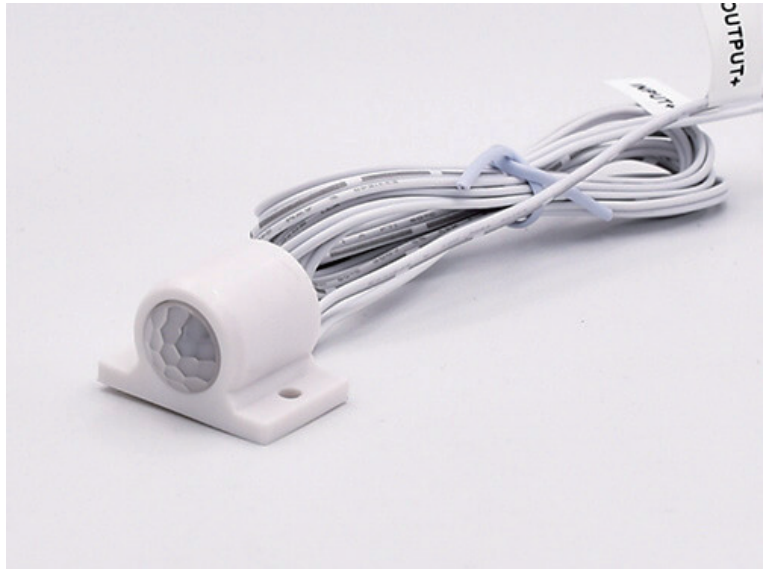


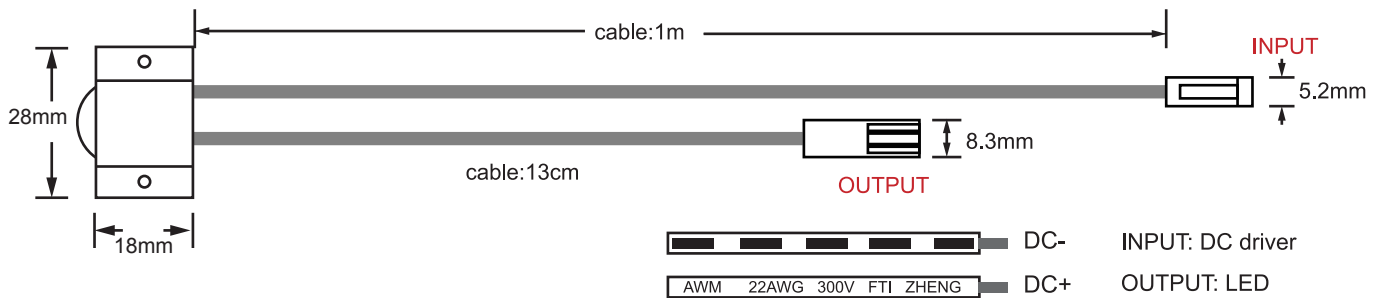
MOTION SENSOR SWITCH

Product Feature

the switch will turn on or turn off when your hand closing to the sensor. small size, only 10mm diameter, easy for embedded installation. Wide working voltage range from 5v to 24v. High sensitivity, No stroboscopic, good stability, long life span.

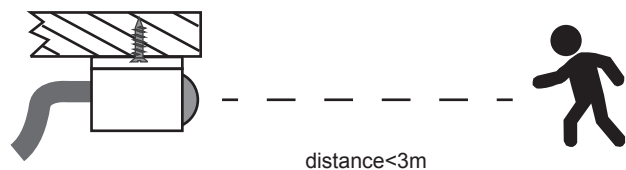


Product Dimension



Technical Specification

Model No.:	LP-5026T
Input Voltage:	5V/20W 12V/60W 24V/60W
Sensing Distance:	3-8cm
Working temperature:	-5℃ - 40℃
IP Class:	IP20



Installation Instruction

