

# Trailing Edge Dimmer Manual

PE382RI / PE383RI (Knob + IR remote control)



## Product Features:

---

- Glass panel, high-grade
- Suitable for all the dimmable led driver and general led driver on the market
- Standard 86 installation structure, suitable for flush mounting and on wall mounting
- 0.2~100% brightness control
- Stepless dimming, adjusted lamplight soft, stable, fine and smooth, no flicker
- Brightness fast selection
- Can set the minimum brightness, match different dimmable led driver
- Overheating protection function
- Four kinds of DIY scene model human design
- Delay 30 seconds turn off function

Please kindly read this manual before using this product

## Parameters:

---

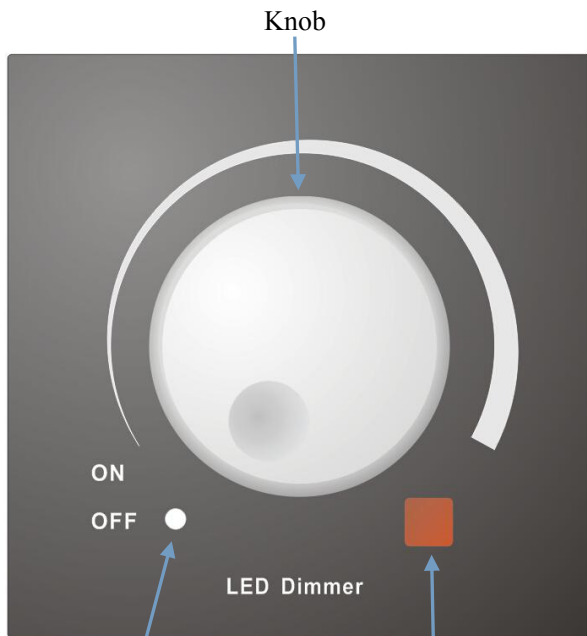
Dimming Way: Trailing edge phase cut (RPC) dimmer  
Remote Control Way: RF Remote Control (433.92MHz)  
Panel Control: Capacitive Touch  
Output Rated Power(W)

PE 382RI	100W(110V)	200W(220V)	□
PE 383RI	200W(110V)	400W(220V)	□

Input Voltage (VAC) 90-250VAC  
Input Frequency(Hz) 47-63Hz  
Dimming Steps: 100 steps  
Remote Control Model: PE-IR12  
Remote Control Distance: >8 meters  
Remote Control Battery: AAA 2battery  
Product Dimensions L\*W(mm) 85\*85mm Package  
Dimensions L\*W\*H(mm) 100\*92\*62

## Panel description:

---



Knob turn left: brightness reduce:  
Turn right: brightness increase  
Turn left to OFF position, turn off

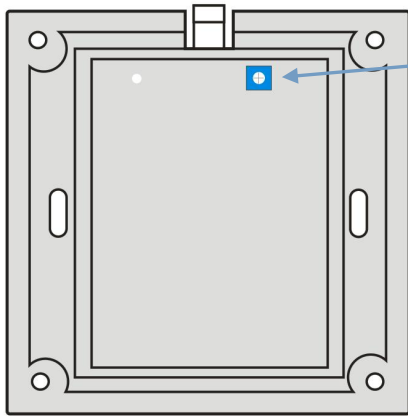
Indicator light:

The light is normally on when turn off. The indicator light is off when turn on. The indicator light will flashing lights when dimming.

the indicator light will normally on a second when adjusting to the max or min.

Limit the minimum brightness:

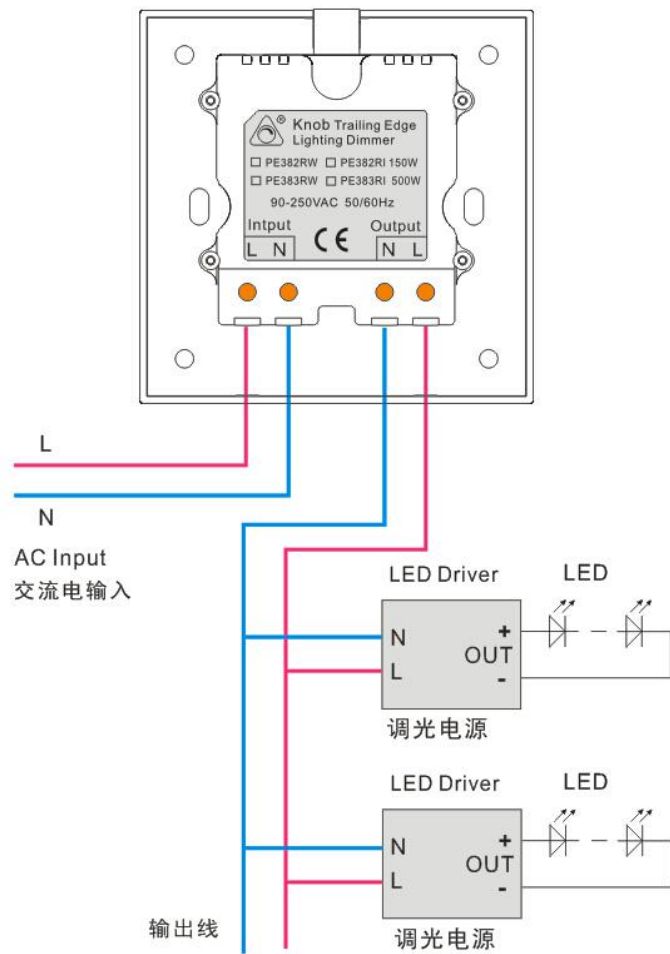
the dimmable driver on the market differ from each other, a large part of them maybe flicker while dimming to minimum. Limit the minimum brightness will resolve the problem to make the LED light will not flicker.



Potentiometer

Usage, adjust to min via the panel or remote control; then remove the front panel, adjust this potentiometer, turn it left the brightness down, turn right the brightness up, to make the LED lamp normal light and no flicker, it will be OK

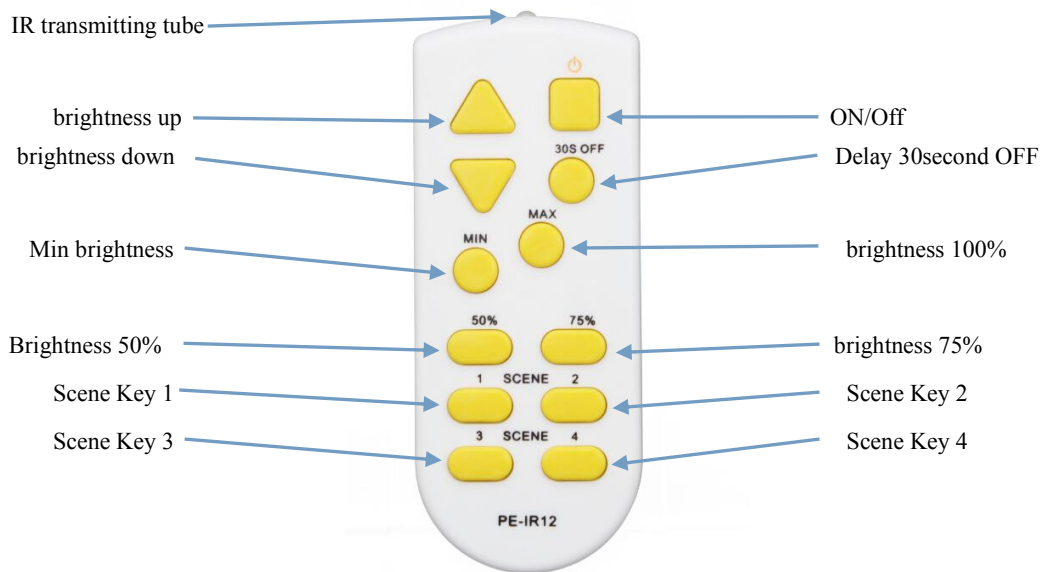
## Wiring Diagram



Remark: the internal of N terminal of the dimmer's output and input is connected together, sometimes, the N line of the LED lamp can needn't go through the LED dimmer

## IR remote control functional specification:

---



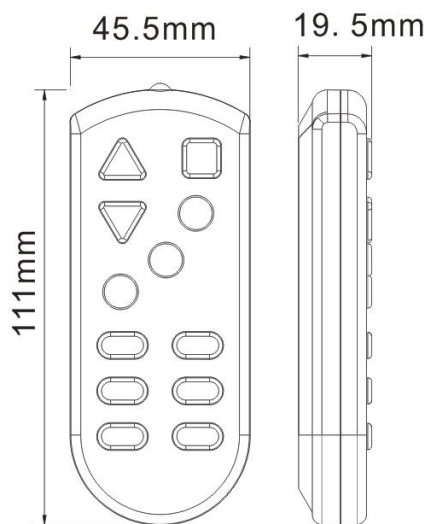
Custom the brightness of scene key:

Signal press the scene key less than 3s, then you will bring up the brightness of this scene key

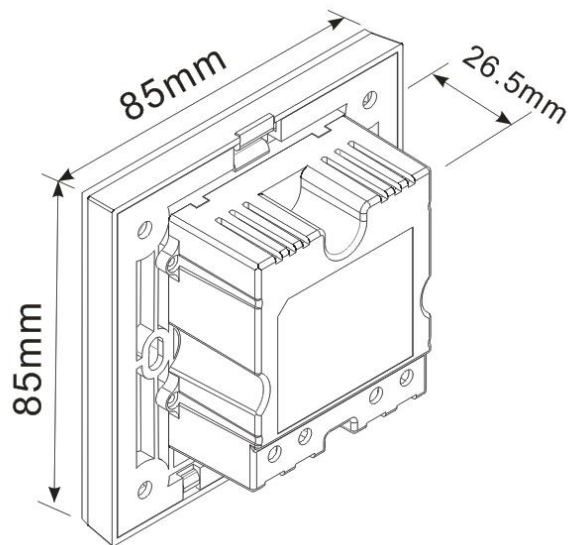
Press the scene key more than 3s, the indicator light is normally on , remember the current brightness to corresponding scene key

## Dimensions:

---



**Remote control**

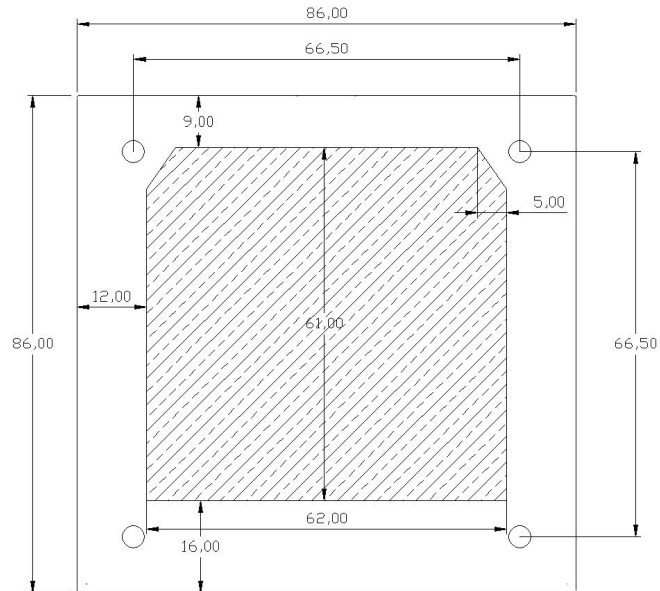


**Dimmer Panel**

## Hole size:

---

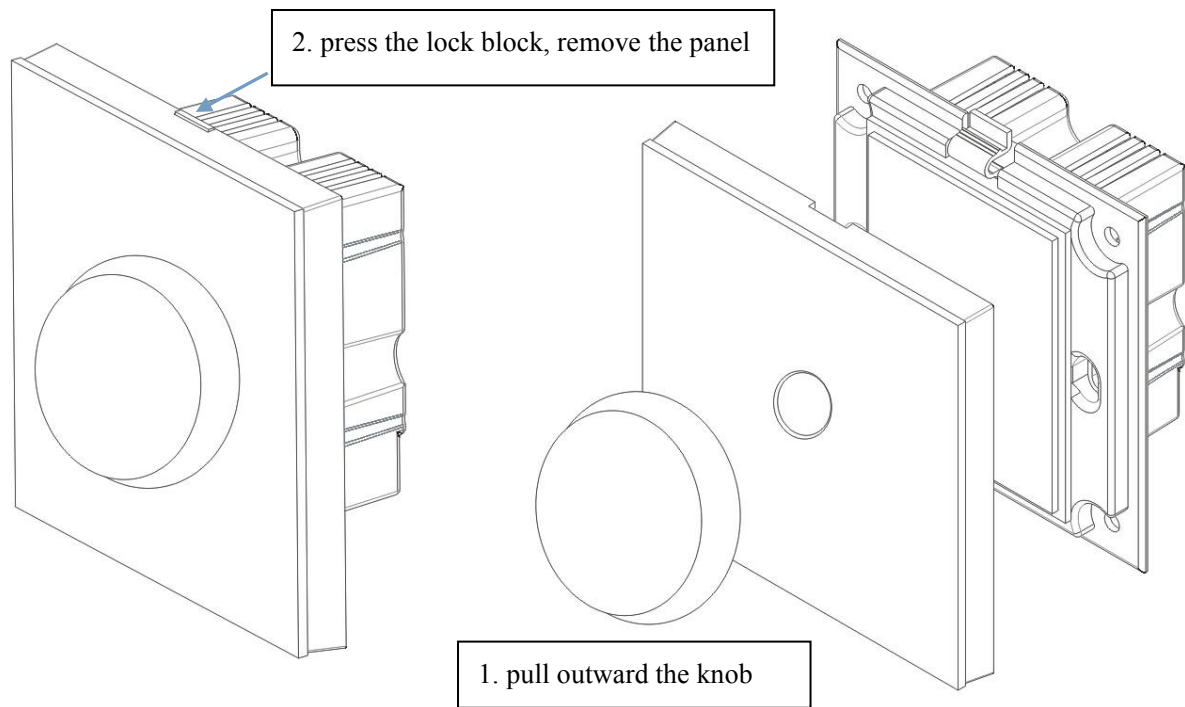
The dimmer is standard 86 installation structure, can install on the bottom case of flush mounting or wall mounting, if user have not bottom case need to trepanning, please trepanning according to below size for easy to assemble.



## Product installation method:

---

Pull outward knob, remove the knob, use hand holding the top of the lock block, remove the front panel; connect the wiring according to wiring diagram, then installing the host body with screw on the wall or in the bottom case, cover the shell, hold back the knob, the installation is complete.



## Installation notes:

---

1. Can't touch any metal parts of the dimmer after opening the mail panel, due to the dimming way of the dimmer is high pressure dimmable way

2. Can't clean the dimmer with wet cloth to avoid electric shock.