

# Test Report

Report No. RHS01F017022001

Page 1 of 5

**Applicant** HUNAN FOUNDERSOONEST ELECTRONIC TECHNOLOGY CO LTD  
**Address** WUSHI INDUSTRIAL PARK PINGJIANG YUEYANG, HUNAN CHINA

**The following sample(s) and sample information was/were submitted and identified by/on the behalf of the client**

Sample Name 白色柔性线路板  
Material 聚酰亚胺柔性覆铜板  
Color 白色  
Sample Received Date Oct. 17, 2013  
Testing Period Oct. 17, 2013 to Oct. 21, 2013

**Test Requested** As specified by client, to test Lead(Pb), Cadmium(Cd), Mercury(Hg), Hexavalent Chromium(Cr(VI)), Polybrominated Biphenyls(PBBs), Polybrominated Diphenyl Ethers(PBDEs) in the submitted sample(s).

**Test Method** Please refer to the following page(s).

**Test Result(s)** Please refer to the following page(s).

\*\*\*\*\*

**Conclusion**

Tested Sample	According to directive	Result
Submitted Sample	2011/65/EU*	Pass

\*\*\*\*\*

\*2011/65/EU is a new version of RoHS Directive (2002/95/EC), which focuses on restriction of the use of certain hazardous substances (Lead(Pb), Cadmium(Cd), Mercury(Hg), Hexavalent Chromium(Cr(VI)), Polybrominated Biphenyls(PBBs), Polybrominated Diphenyl Ethers(PBDEs)) in electrical and electronic equipment.

Pass means that the results shown on the report do not exceed the limits set by RoHS Directive 2011/65/EU.

Tested by Rick Lin

Reviewed by Vangar He



Danny Liu

Date Oct. 21, 2013

Danny Liu  
Technical Manager

No. 1012214303

Centre Testing International (Shenzhen) Co., Ltd. Hongwei Industrial Zone, Bao'an 70 District, Shenzhen, Guangdong, China

# Test Report

Report No. RHS01F017022001

Page 2 of 5

## Test Method

Test Item(s)	Test Method	Measured Equipment(s)
Lead(Pb)	IEC 62321:2008 Ed.1 Sec.10	ICP-OES
Cadmium(Cd)	IEC 62321:2008 Ed.1 Sec.10	ICP-OES
Mercury(Hg)	IEC 62321:2008 Ed.1 Sec.7	ICP-OES
Hexavalent Chromium(Cr(VI))	IEC 62321:2008 Ed.1 Annex C	UV-Vis
Polybrominated Biphenyls(PBBs)	IEC 62321:2008 Ed.1 Annex A	GC-MS
Polybrominated Diphenyl Ethers(PBDEs)	IEC 62321:2008 Ed.1 Annex A	GC-MS

## Test Result(s)

Tested Item(s)	Result	MDL	Limit of Directive 2011/65/EU
Lead(Pb)	N.D.	2 mg/kg	1000 mg/kg
Cadmium (Cd)	N.D.	2 mg/kg	100 mg/kg
Mercury(Hg)	N.D.	2 mg/kg	1000 mg/kg
Hexavalent Chromium(Cr(VI))	N.D.	2 mg/kg	1000 mg/kg

Tested Item(s)	Result	MDL	Limit of Directive 2011/65/EU
<b>Polybrominated Biphenyls(PBBs)</b>			
Monobromobiphenyl	N.D.	5 mg/kg	1000 mg/kg
Dibromobiphenyl	N.D.	5 mg/kg	
Tribromobiphenyl	N.D.	5 mg/kg	
Tetrabromobiphenyl	N.D.	5 mg/kg	
Pentabromobiphenyl	N.D.	5 mg/kg	
Hexabromobiphenyl	N.D.	5 mg/kg	
Heptabromobiphenyl	N.D.	5 mg/kg	
Octabromobiphenyl	N.D.	5 mg/kg	
Nonabromobiphenyl	N.D.	5 mg/kg	
Decabromobiphenyl	N.D.	5 mg/kg	

# Test Report

Report No. RHS01F017022001

Page 3 of 5

Tested Item(s)	Result	MDL	Limit of Directive 2011/65/EU
<b>Polybrominated Diphenyl Ethers(PBDEs)</b>			
Monobromodiphenyl ether	N.D.	5 mg/kg	1000 mg/kg
Dibromodiphenyl ether	N.D.	5 mg/kg	
Tribromodiphenyl ether	N.D.	5 mg/kg	
Tetrabromodiphenyl ether	N.D.	5 mg/kg	
Pentabromodiphenyl ether	N.D.	5 mg/kg	
Hexabromodiphenyl ether	N.D.	5 mg/kg	
Heptabromodiphenyl ether	N.D.	5 mg/kg	
Octabromodiphenyl ether	N.D.	5 mg/kg	
Nonabromodiphenyl ether	N.D.	5 mg/kg	
Decabromodiphenyl ether	N.D.	5 mg/kg	

**Tested Sample/Part Description** White FPC(Test as a whole)

**Note:**

- The sample(s) had been dissolved totally tested for Lead, Cadmium, Mercury.
- As specified by client, the sample was tested as a whole. The result(s) shown on this report may be different from the content of any homogeneous material.
- MDL = Method Detection Limit
- N.D. = Not Detected (<MDL )
- mg/kg = ppm = parts per million

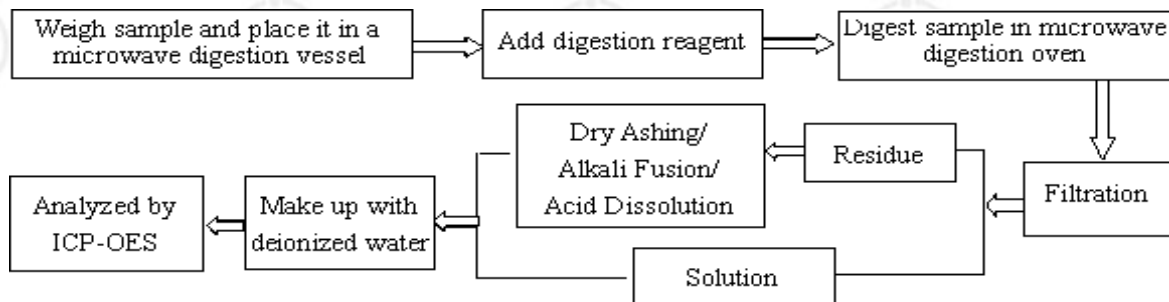
# Test Report

Report No. RHS01F017022001

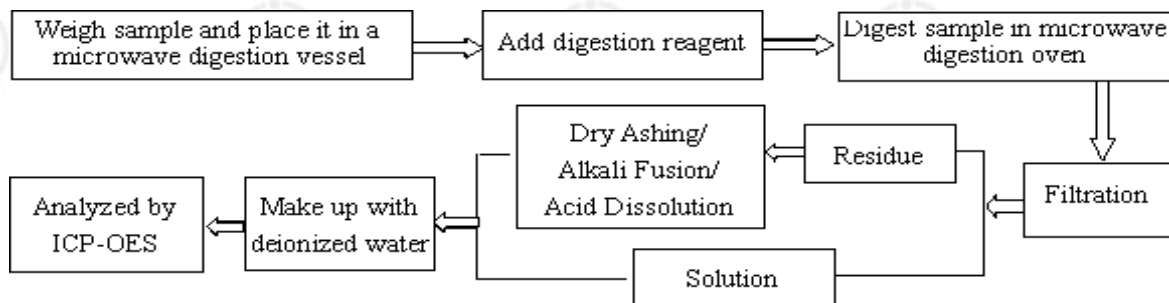
Page 4 of 5

## Test Process

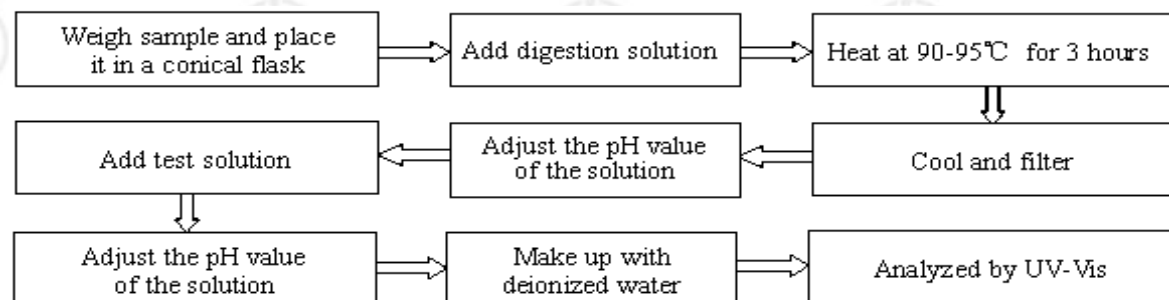
### 1. Lead(Pb), Cadmium(Cd)



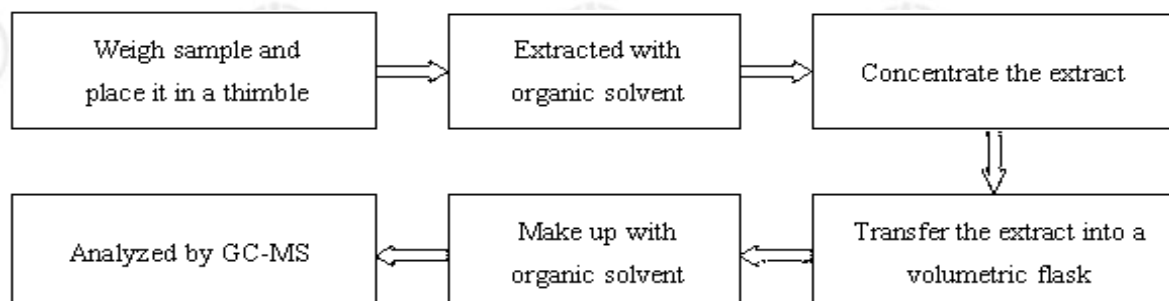
### 2. Mercury(Hg)



### 3. Hexavalent Chromium(Cr(VI))



### 4. Polybrominated Biphenyls(PBBs), Polybrominated Diphenyl Ethers(PBDEs)

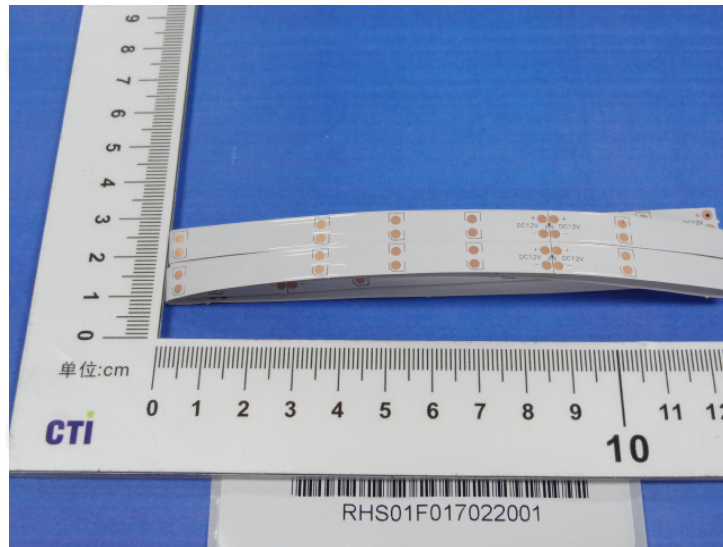


# Test Report

Report No. RHS01F017022001

Page 5 of 5

## Photo(s) of the sample(s)



\*\*\* End of report \*\*\*

The test report is effective only with both signature and specialized stamp. The result(s) shown in this report refer only to the sample(s) tested. Without written approval of CTI, this report can't be reproduced except in full.